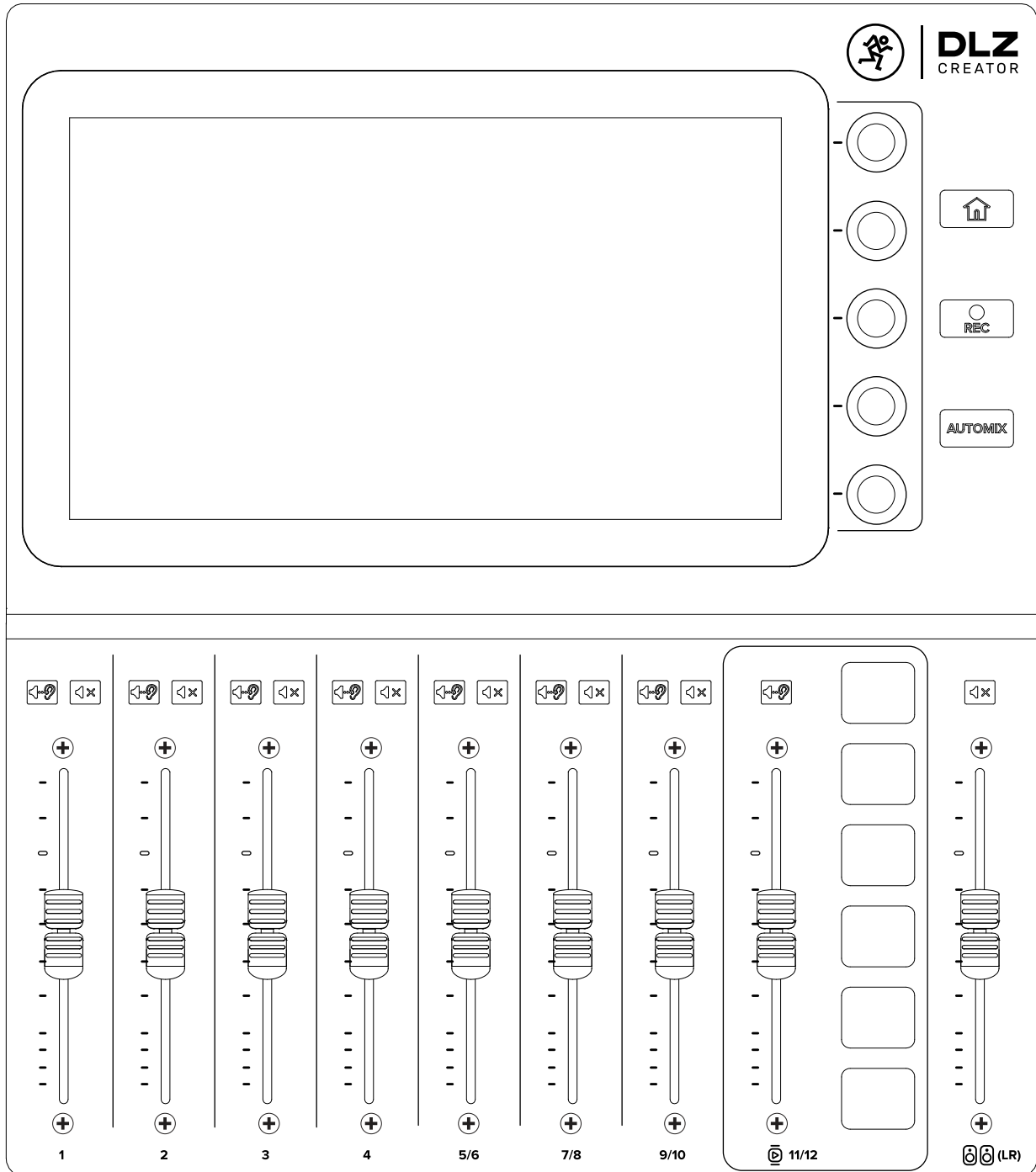
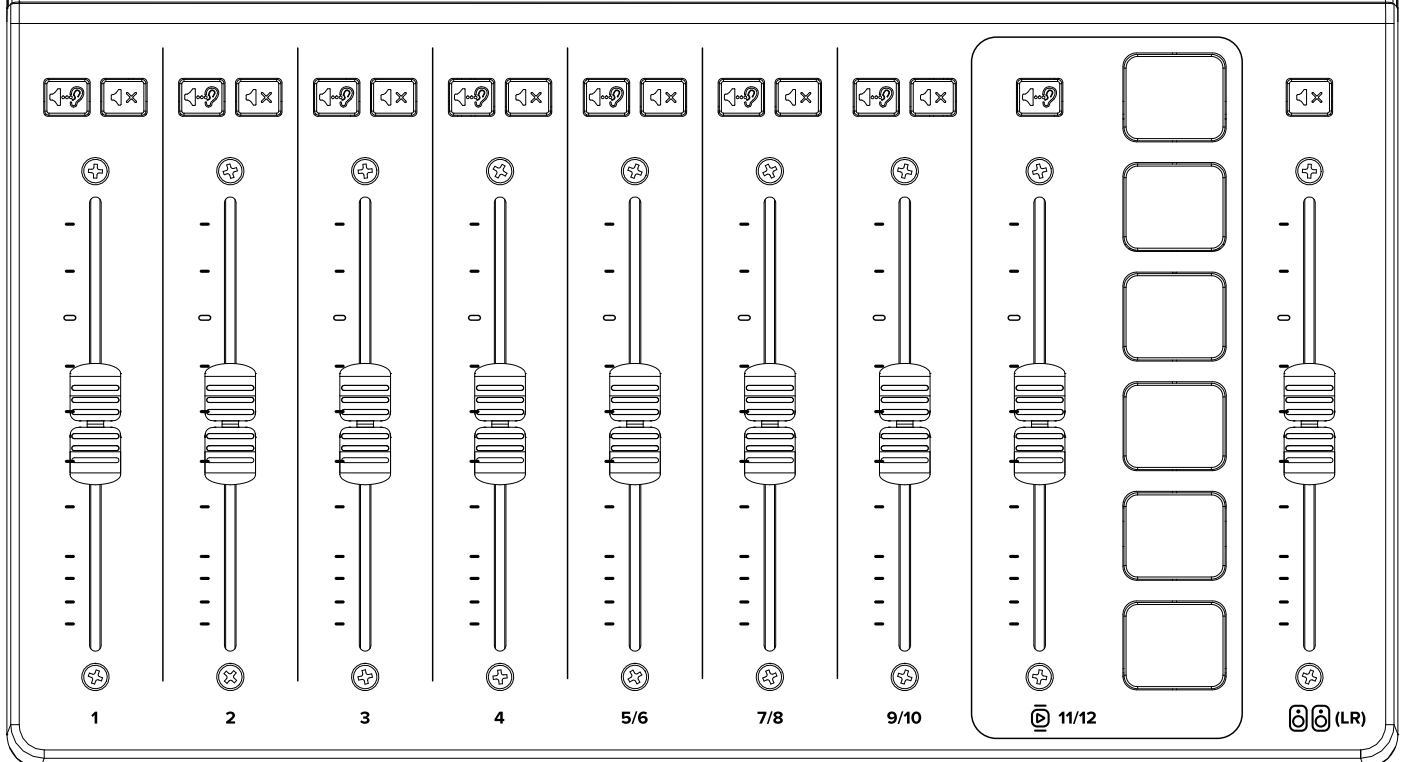
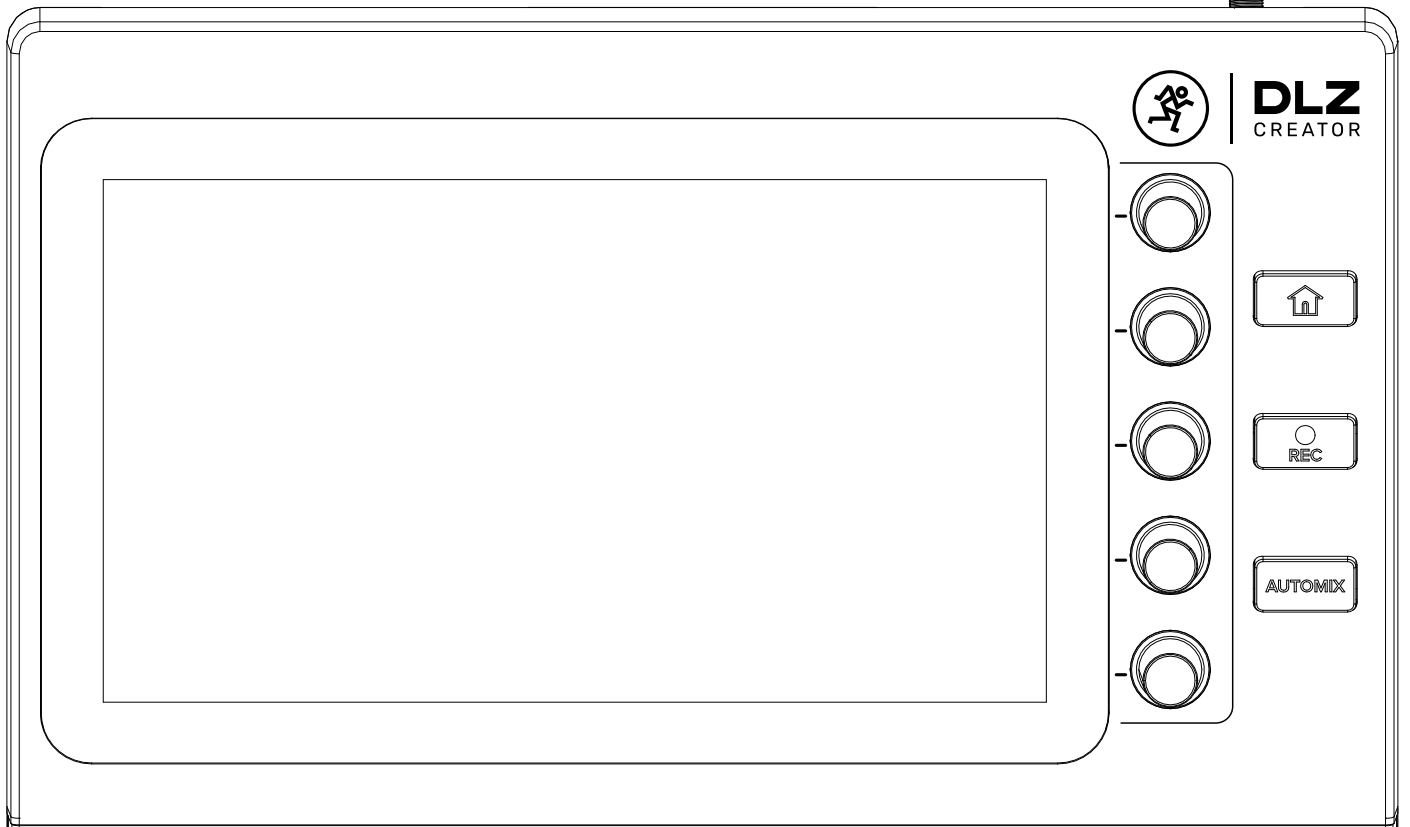
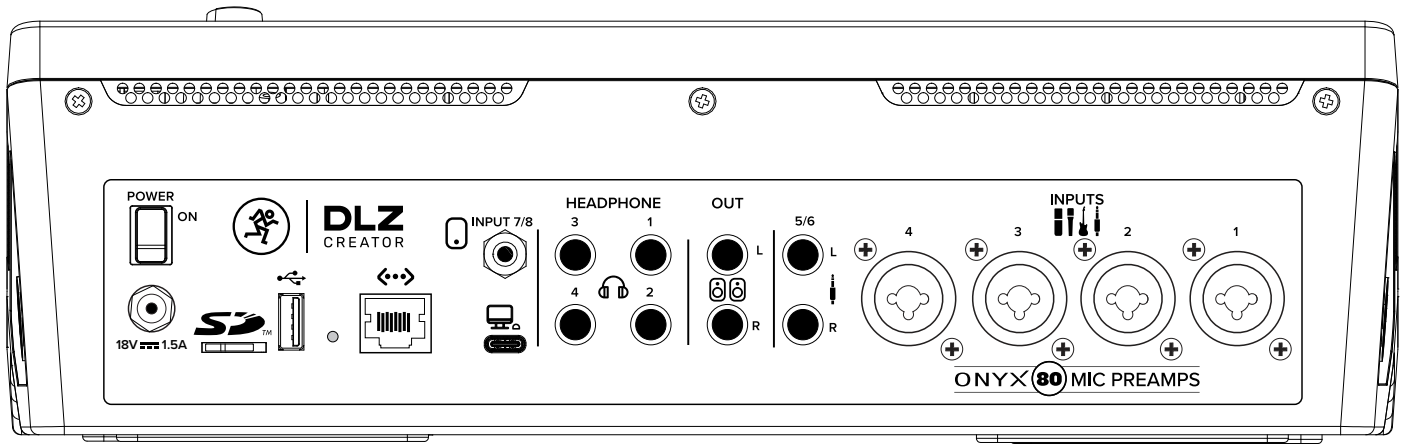


DLZ[™] CREATOR

ADVANCED CONTENT CREATION STUDIO
WITH MIX AGENT[™] TECHNOLOGY

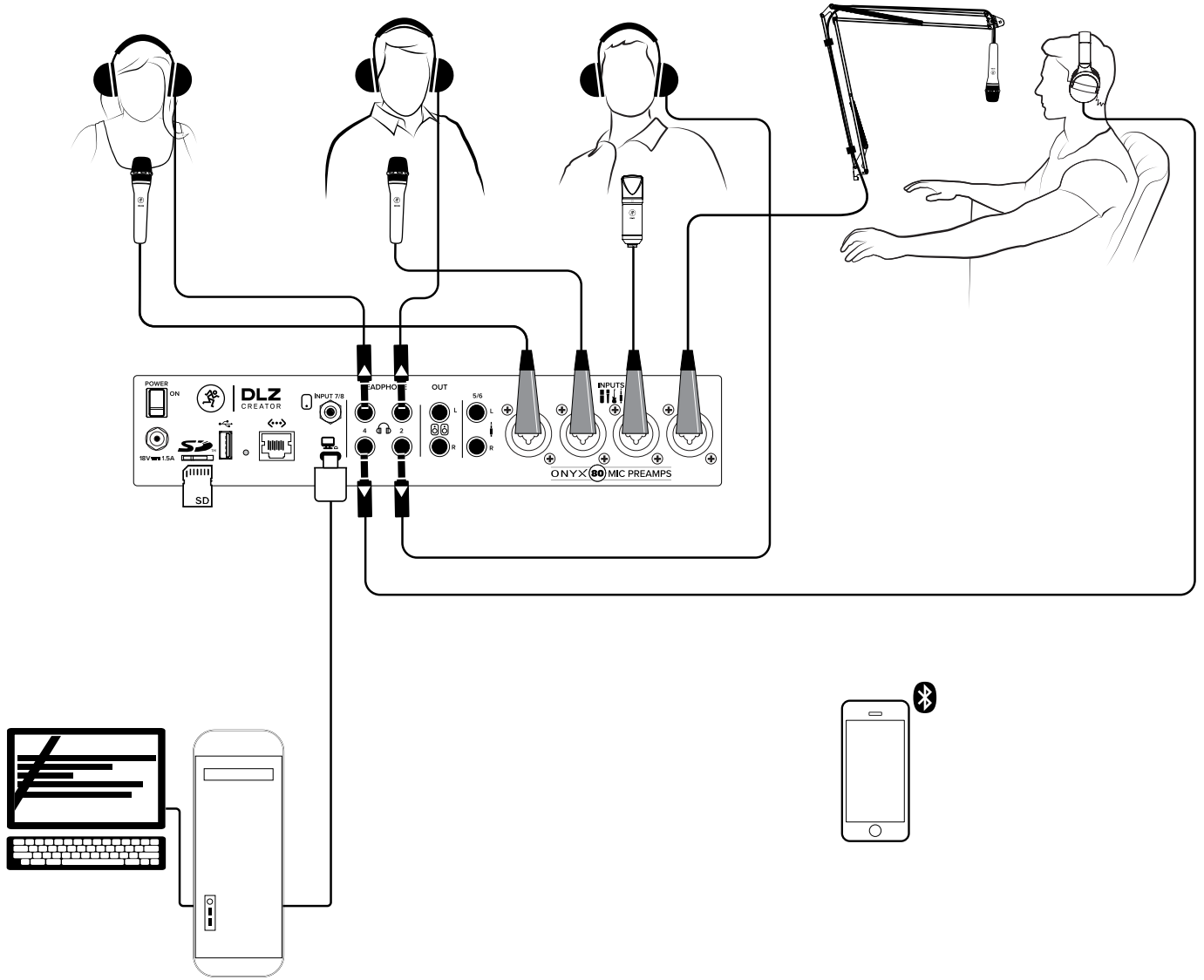
QUICK START GUIDE



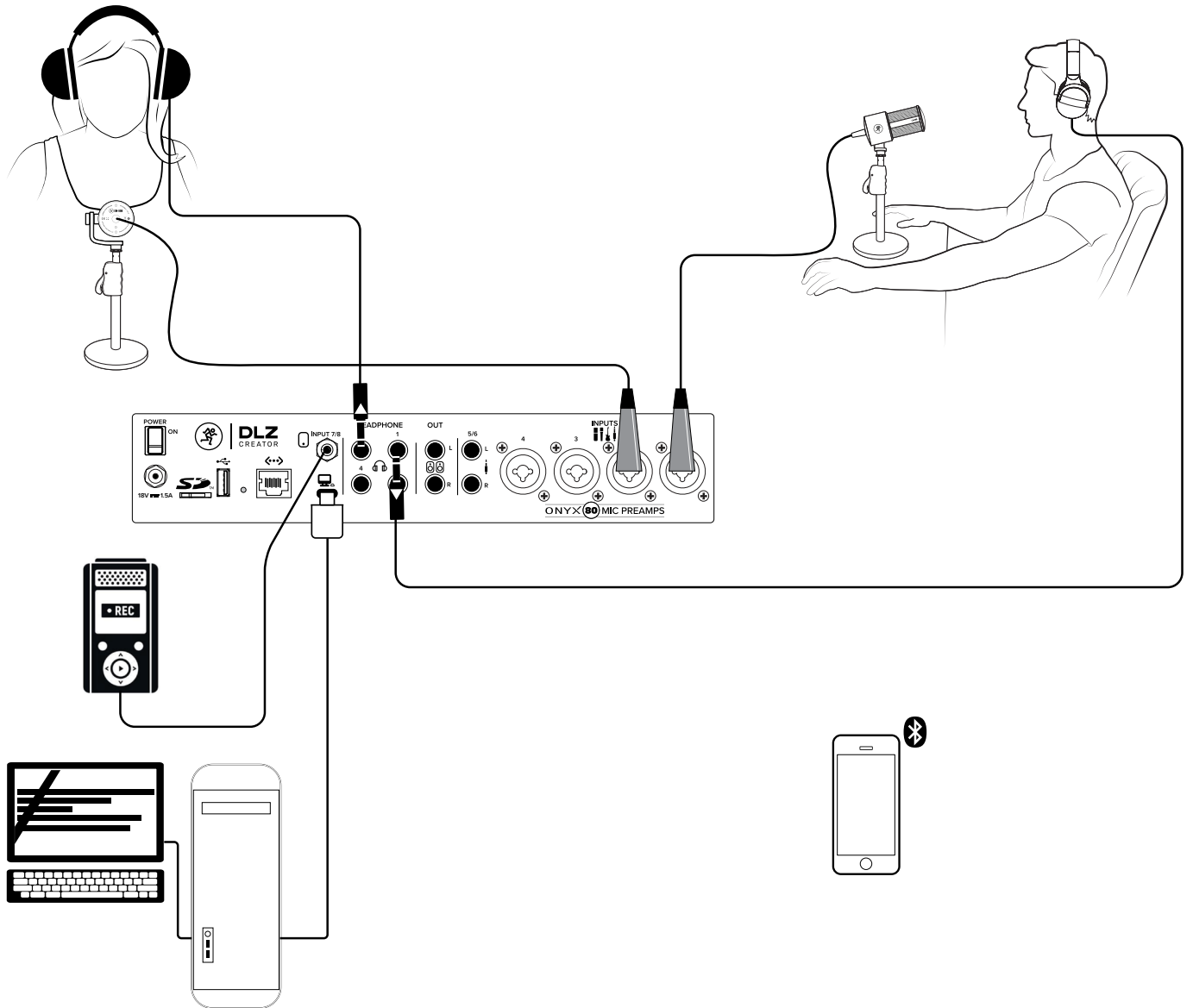


HOOKUP DIAGRAMS • DIAGRAMAS DE CONEXIÓN SCHÉMAS DE CÂBLAGE • ANSCHLUSSDIAGRAMME

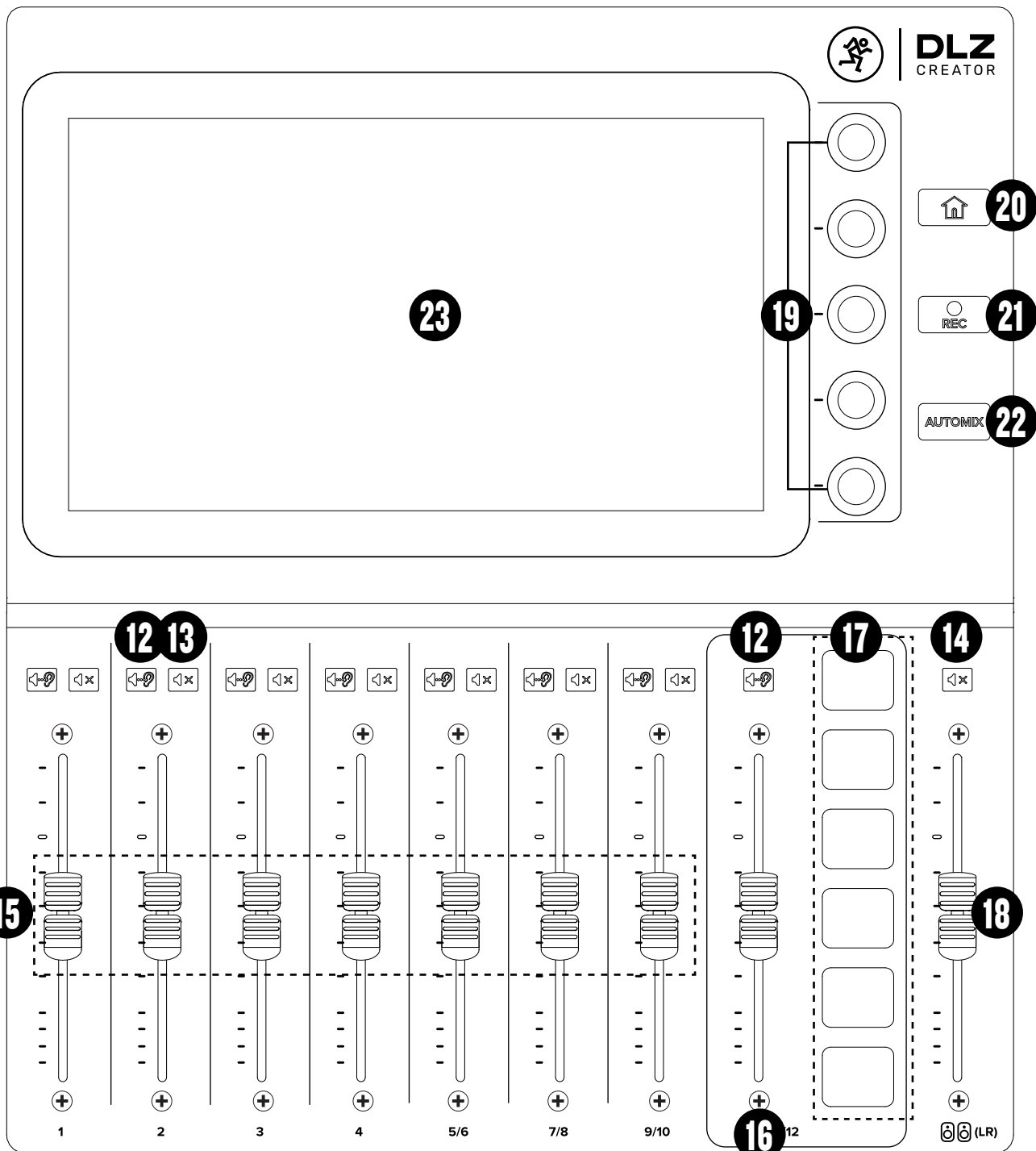
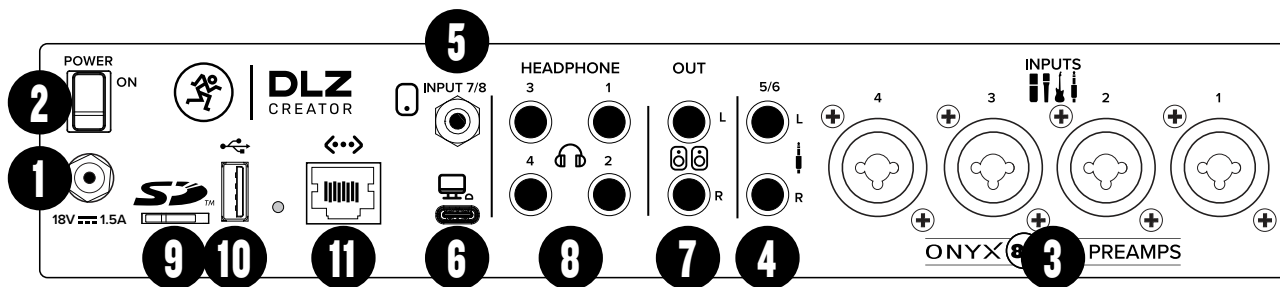
Podcasting



Live Streaming
Streaming en directo
Streaming en direct
Live Streaming



DLZ CREATOR FRONT & REAR PANEL



DLZ CREATOR is not a difficult product to master.
However, there is MUCH more to it than may be explained here.
Therefore, we strongly encourage you to review the full owner's manual
on the Mackie website should any additional questions arise.

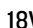
FRONT & REAR PANEL DESCRIPTIONS

- | | |
|---|--|
| <p>1. Power Connector Connect the supplied power adapter to this jack and turn the outer ring clockwise to lock.</p> <p>2. Power Switch Turns the DLZ CREATOR on and off.</p> <p>3. Combo Inputs Connect a mic, instrument or balanced or unbalanced line-level signal using an XLR or 1/4" connector.</p> <p>4. Stereo Line Inputs Connect stereo unbalanced line-level signals using 1/4" connectors.</p> <p>5. 1/8" Stereo Input Connect an 1/8" line-level signal from a smartphone, MP3 player, or other signal source.</p> <p>6. USB I/O An interface allowing you to stream audio to and from the DLZ CREATOR via computer. Connect the USB-C side of a USB cable to the DLZ CREATOR and the USB-A side to the computer's USB port.</p> <p>7. Speaker Out L/R Connect to the inputs of speakers.</p> <p>8. Phones Jacks Connect stereo headphones here.</p> <p>9. SD Card Slot Insert an SD card to allow recording / playback.</p> <p>10. USB A Connect a flash drive and record direct or connect a keyboard here for naming and hot keys.</p> <p>11. Network Connector Ethernet streaming coming in a future update.</p> | <p>12. Solo Switch Allows you to listen to individual channels singly or in combination with other soloed signals. The button illuminates if the solo switch is engaged.</p> <p>13. Mute Mutes the channel signal. The button illuminates if the mute switch is engaged.</p> <p>14. Speaker Mute Mutes the output to the speakers.</p> <p>15. Channel Fader Adjusts the level to the main mix.</p> <p>16. Sample Pads Channel Fader Adjusts the level of the sample pads to the main mix.</p> <p>17. Sample Pads Press a pad to play the saved sample. The pad illuminates during playback.</p> <p>18. Speaker Level Adjusts the level of the signal sent to the speaker outputs.</p> <p>19. Quick Control Knobs Rotate these encoders to change the currently selected parameters.</p> <p>20. Home Press the HOME button to return to the main mixer view.</p> <p>21. Record Press the REC button to begin the recording process.</p> <p>22. Auto-Mix Press the AUTO-MIX button to quiet unused channels and select the priority of ones that are in use.</p> <p>23. Display Where you will view everything from levels and meters to effects and settings.</p> |
|---|--|

GETTING STARTED

- | | |
|--|--|
| <p>1. Read and understand the Important Safety Instructions on page 4.</p> <p>2. Turn all the faders fully down.</p> <p>3. Connect the locking barrel connector of the Power Block to the mixer and rotate the outer ring clockwise to lock. Push the line cord securely into the Power Block and plug the other end into a grounded AC outlet.</p> <p>4. Turn the DLZ CREATOR on.</p> <p>5. Please be patient as the system and its parameters load up.</p> | <p>6. Choose a work mode. We recommend starting with 'Easy'.</p> <p>7. Ensure that the Setup Assistant is toggled on and click 'Next'.</p> <p>8. Follow the on-screen instructions.</p> <p>9. Raise and lower the input and output volumes to a comfortable listening level.</p> <p>10. Switch to Standard or Pro mode for access to additional parameters.</p> <p>11. Add presets, EQ, FX, etc. to taste.</p> |
|--|--|

TECHNICAL SPECIFICATIONS • ESPECIFICACIONES TÉCNICAS CARACTÉRISTIQUES TECHNIQUES • TECHNISCHE DATEN

	DLZ CREATOR
Digital Specifications Especificaciones digitales Caractéristiques numériques Digitale Spezifikationen	Sample Rate: 48 kHz • A/D/A Bit Depth: 24-bit • System Latency: ~3 ms Frecuencia de muestreo: 48 kHz • Profundidad de bits A/D/A: 24 bits • Latencia del sistema: ~3 ms Fréquence d'échantillonnage : 48 kHz • Résolution A/N/A: 24 bits • Latence du système: ~3 ms Samplerate: 48 kHz • A/D/A Bit-Tiefe: 24-Bit • Systemlatenz: ~3 ms
Inputs Entradas Entrées Eingangs	4x balanced/unbalanced combo jacks, 1/4" unbalanced stereo jack, 1/8" stereo jack
Outputs Salidas Sorties Ausgangs	Balanced/unbalanced 1/4" main out jacks, 4x stereo headphone jacks
Bluetooth	5.0
USB	Format: USB 2.0 HS (480Mb/s) Formato: USB 2.0 HS (480Mb/s) Format : USB 2.0 HS (480Mb/s) Format: USB 2.0 HS (480Mb/s)
SD	Multitrack (12 chan + main mix) / 24-bit / 48kHz SD speed class 10 or speed class UHS recommended. Multipistas (12 canales + mezcla principal) / 24 bits / 48 kHz recomendable SD speed class 10 o speed class UHS. Multipistes (12 voies + mix principal) / 24 bits / 48 kHz classe de vitesse SD 10 ou UHS recommandée. Mehrspur (12 Kanäle + Hauptmischung) / 24-Bit / 48 kHz SD-Geschwindigkeit Class 10 oder Class UHS Geschwindigkeit empfohlen
Power Requirements Alimentación Alimentation Spannungsbedarf	18V  1.5A
Size (H x W x D) Tamaño (A x L x P) Dimensions (H x L x P) Abmessungen (H x B x T)	4.1 x 13.0 x 15.0 in 104 x 330 x 381 mm
Weight Peso Poids Gewicht	6.1 lb 2.8 kg

All specifications subject to change
 Todas estas especificaciones están sujetas a cambios sin previo aviso
 Les caractéristiques peuvent être modifiées
 Technische Änderungen und Ergänzungen vorbehalten

